

Substance Use Disorder (SUD) Prevention and the Role of Peer Recovery Support Services (PRSS)



Tuesday, April 27, 2021

3:00 p.m. – 4:00 p.m. ET

Housekeeping

- Connection to audio is available through the dial-out feature via the link provided. If you are having difficulty connecting, you may also use the dial-in feature. Information to connect by dial-in is available on the screen.
- Use the Q&A Pod on your screen to send your questions to the moderator. These questions are viewable to the moderator only.
- For technical issues during the event,
 - Contact us at info@t4pcenter.org.
 - Contact us via the Q&A Pod.



Substance Use Disorder (SUD) Prevention and the Role of Peer Recovery Support Services (PRSS)

Dona Dmitrovic
Director

Center for Substance Abuse Prevention
Substance Abuse and Mental Health Services Administration
U.S. Department of Health and Human Services

Dept. of Education T4PA webinar
April 27, 2021



SAMHSA
Substance Abuse and Mental Health
Services Administration

State of America's Children

Each Day in America

2	mothers die from complications of childbirth.
5	children are killed by abuse or neglect.
8	children or teens die by suicide.
9	children or teens are killed with a gun.
20	children or teens die from accidents.
46	children or teens are injured with a gun.
59	babies die before their first birthday.
121	children are arrested for violent crimes.
223	children are arrested for drug crimes.
514	public school students are corporally punished.*
678	babies are born without health insurance.
827	babies are born into extreme poverty.
860	babies are born with low birth weight.
1,541	babies are born into poverty.
1,785	children are confirmed as abused or neglected.
1,909	children are arrested.
2,906	high school students drop out.*
14,206	public school students are suspended.*

*Based on 180 school days a year.

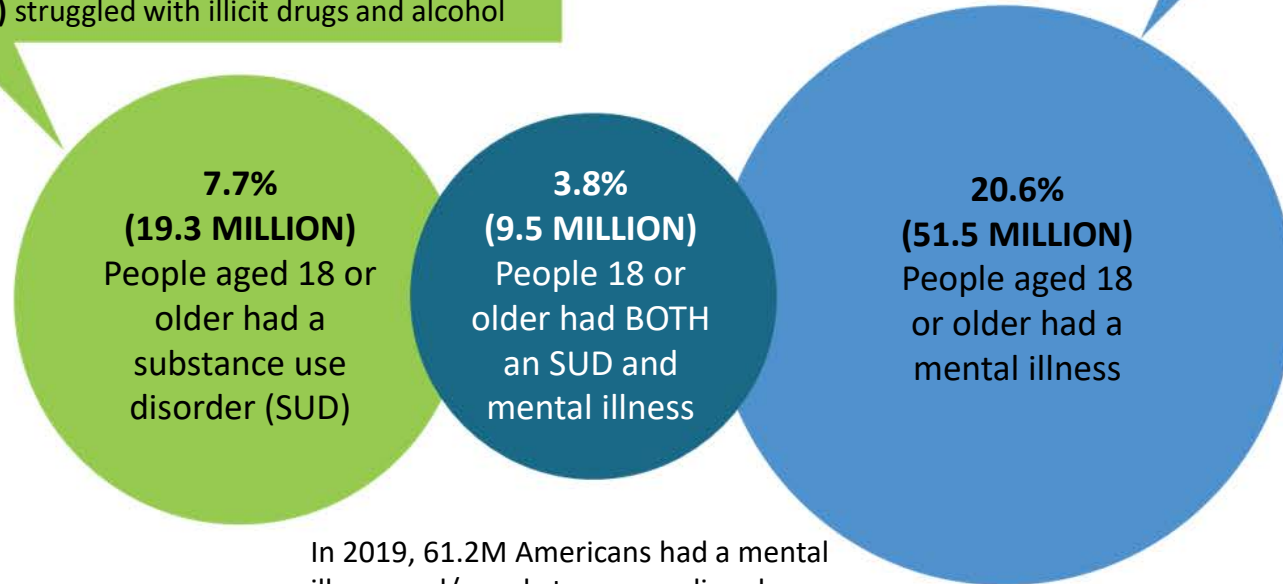
Mental Illness and Substance Use Disorders in America

PAST YEAR, 2019 NSDUH, 18+

Among those with a substance use disorder:

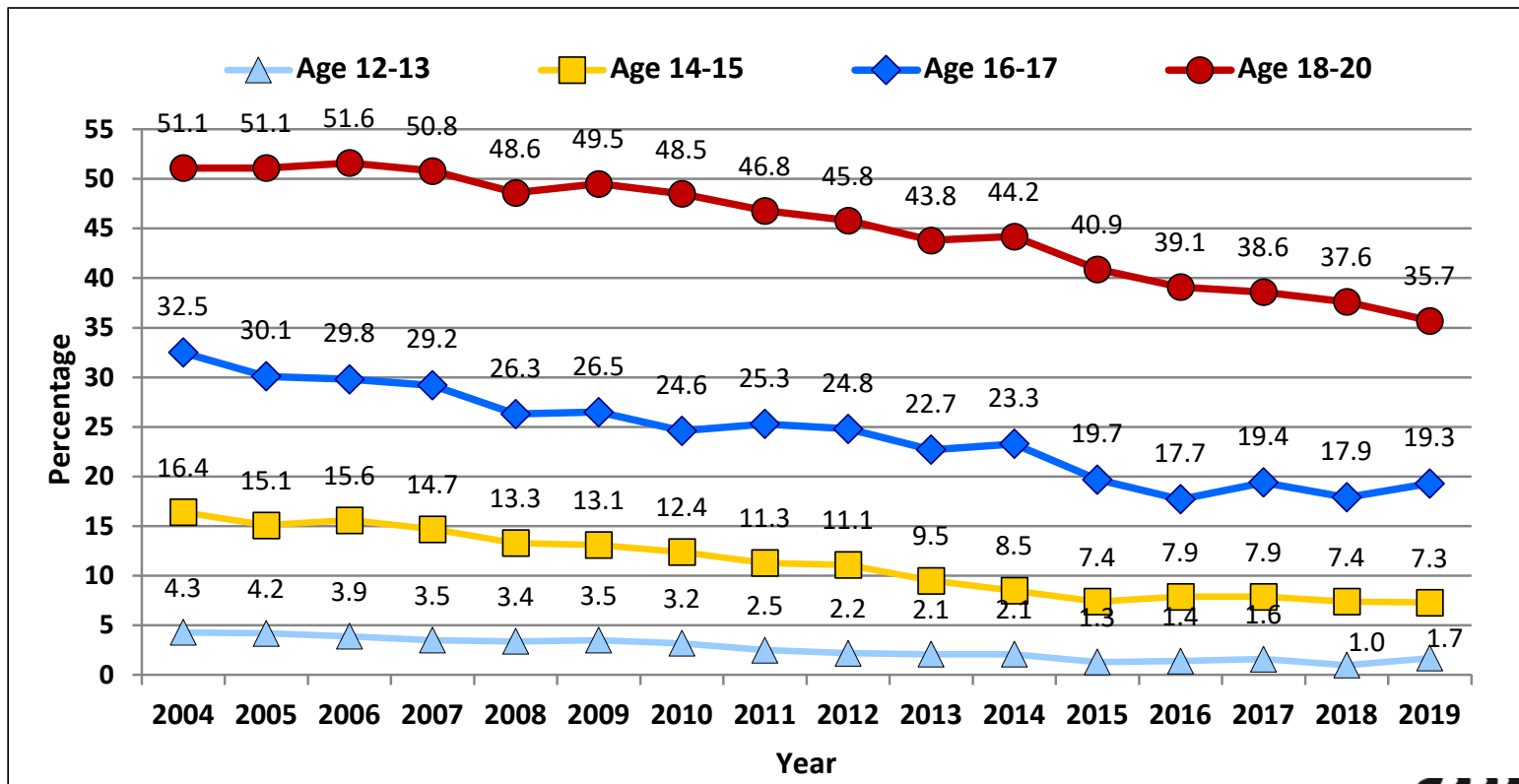
- 2 IN 5 (38.5% or 7.4M)** struggled with illicit drugs
- 3 IN 4 (73.1% or 14.1M)** struggled with alcohol use
- 1 IN 9 (11.5% or 2.2M)** struggled with illicit drugs and alcohol

Among those with a mental illness:
1 IN 4 (25.5% or 13.1M) had a serious mental illness

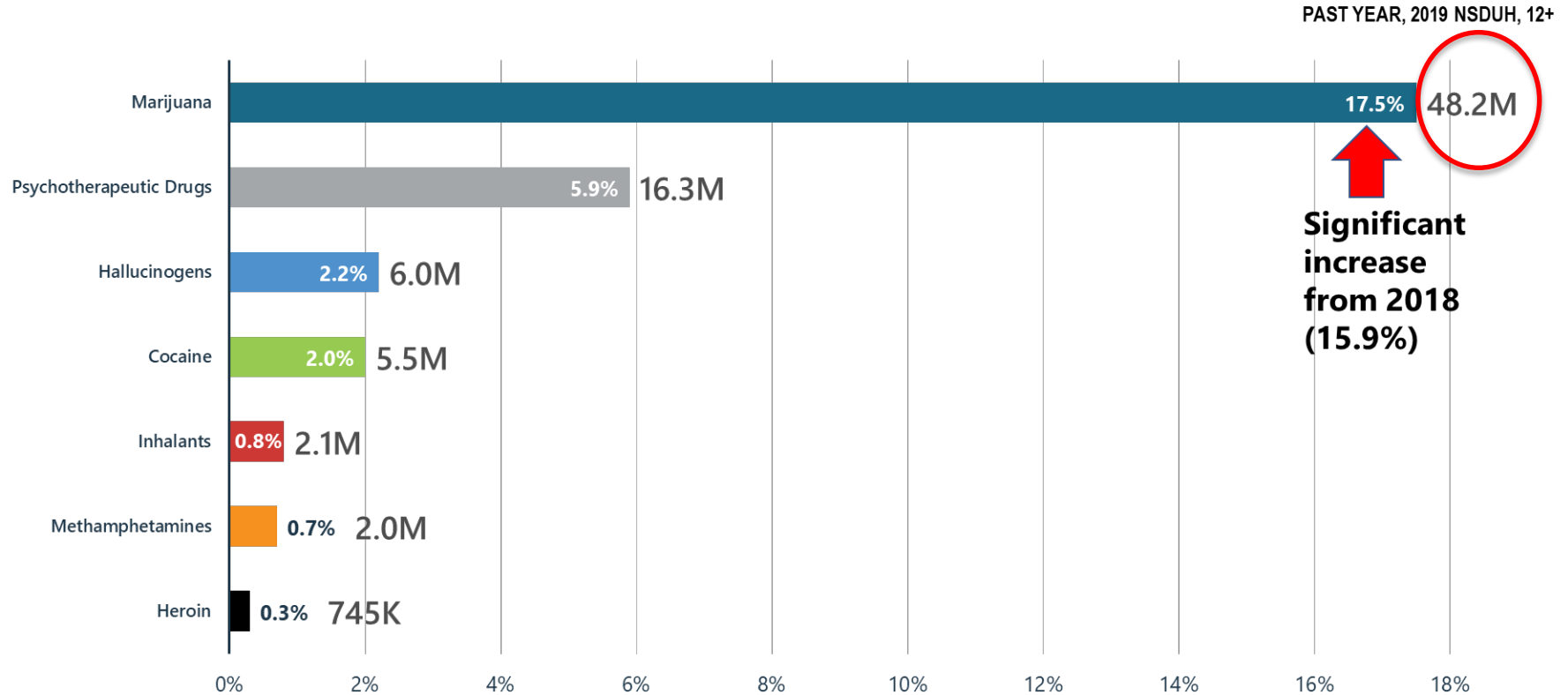


In 2019, 61.2M Americans had a mental illness and/or substance use disorder—an increase of 5.9% over 2018 composed entirely of increases in mental illness.

Past-Month Alcohol Use for 12- to 20-Year-Olds: NSDUH Data 2004–2019

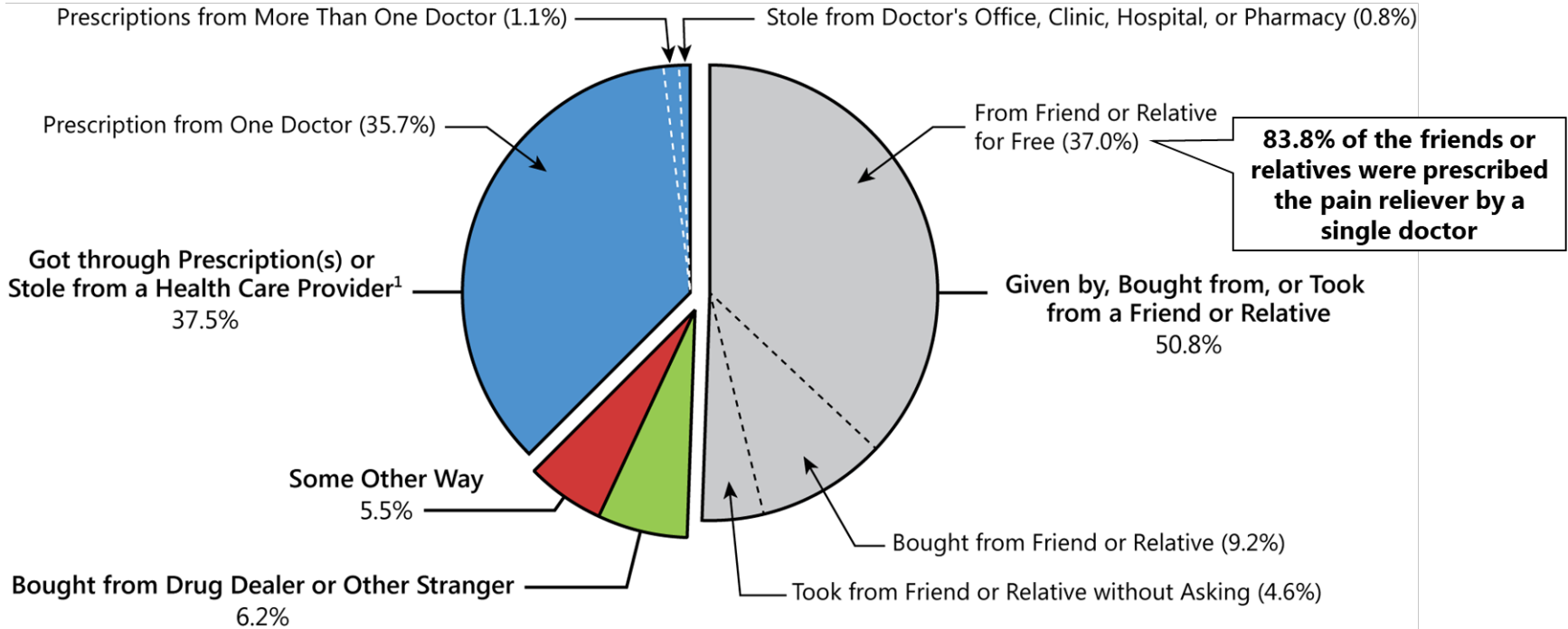


Illicit Drug Use: Major Concerns — Opioids, Marijuana, Methamphetamines



Sources Where Pain Relievers Were Obtained for Most Recent Misuse among People Who Misused Prescription Pain Relievers

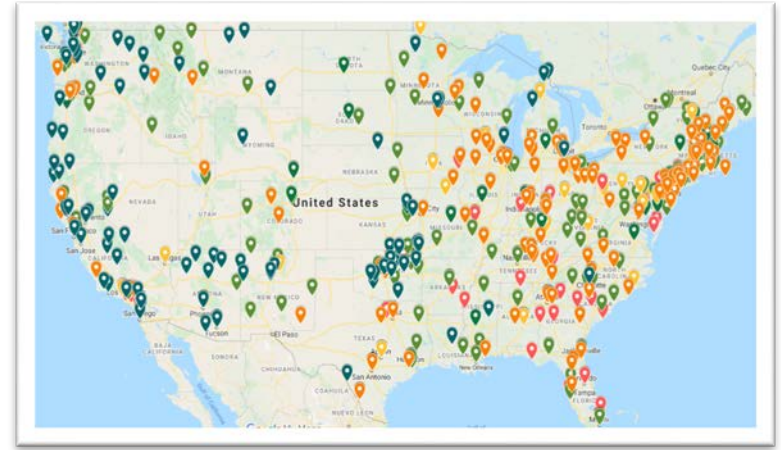
PAST YEAR, 2019 NSDUH, 12+



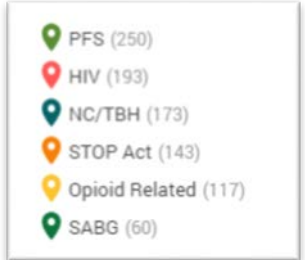
9.7 Million People Aged 12 or Older Who Misused Prescription Pain Relievers in the Past Year

SAMHSA's Prevention Grant Portfolio

- Support communities to implement locally driven substance use prevention programs across the United States.
- Fund 936 grants, reaching thousands of communities, hundreds of thousands of people with direct programs, and millions of people through public messaging campaigns.
- Support prevention programs targeting youth and adults, focusing on alcohol, marijuana, prescription drugs and other opioids, and other illicit drugs. Also, integrate HIV prevention and suicide prevention.



*Not Pictured: Alaska,
Hawaii, Puerto Rico,
U.S. Virgin Islands, Guam,
American Samoa,
Marshall Islands, Northern
Marianas*



nd well-being.
entive healthcare
Prevention
health and social
ving h

Mentoring/Coaching

- One-to-one relationship
- Plan goals, action plans, safe housing, friends, etc.
- Highly supportive and not directive



Areas of Recovery Support

Emotional

Informational

Instrumental

Affiliational

Recovery Schools – High School and Higher Education



ASSOCIATION OF
RECOVERY
SCHOOLS



Example – Mission High School, Las Vegas, NV



WHERE OUR MISSION IS RECOVERY, RELATIONSHIPS, AND RIGOR

Mission

- To educate students who are in recovery from substance use of co-occurring disorders.
- To support students in breaking the chains of addiction and hopelessness.
- To provide a continuum of care through wrap-around services.
- To support students in a strong program of recovery.
- To meet State requirements to earn a secondary school diploma.

Resources to Support Your Local and State Efforts

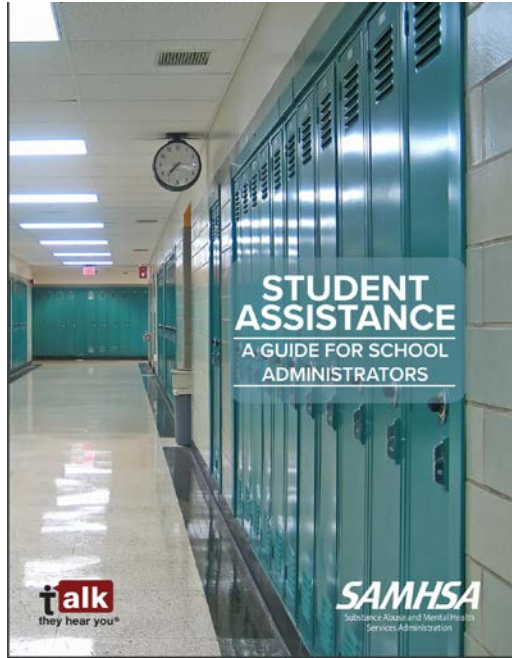




“Talk. They Hear You.”[®]

The campaign aims to **reduce underage drinking and other substance use among youths under the age of 21** by helping parents and caregivers learn how to turn common situations into opportunities to talk with their children about alcohol, drugs, and other substances.

Working with Schools During and Post-Pandemic



School-Based Student Assistance Services

- Provide a prominent and effective means to address substance use and mental health concerns through prevention, early intervention, and ongoing recovery support in K-12 school settings; and
- Integrate trained personnel into schools to support and enhance the work of school faculty, as well as provide a range of services to students.

<https://store.samhsa.gov/product/talk-they-hear-you-student-assistance-guide-school-administrators/pep19-03-01-001>

Student Assistance PSA: “The Incident”





MAY 9-15
2021

Visit the SAMHSA website to learn more about participating in National Prevention Week in your community and find ideas, activities, and resources to make prevention happen every day.
www.samhsa.gov/prevention-week



Communities Talk 2021

Purpose

- Educate the larger community about underage drinking.
- Support the mobilization of community action to prevent underage drinking.

SAMHSA's 2021 *Communities Talk* stipend cycle is now open! Email INFO@STOPALCOHOLABUSE.NET if you would like to participate. Please note that invitations will be sent on a rolling basis.

www.stopalcoholabuse.gov/communitiestalk



Evidence-Based Practices Resource Center

EVIDENCE-BASED RESOURCE GUIDE SERIES

Substance Misuse Prevention for Young Adults



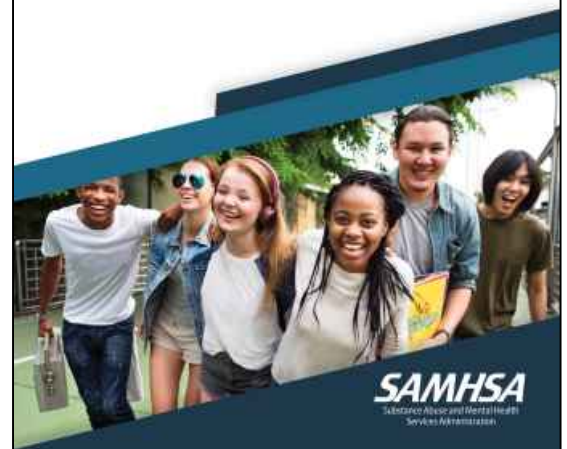
EVIDENCE-BASED RESOURCE GUIDE SERIES

Preventing the Use of Marijuana: Focus on Women and Pregnancy



EVIDENCE-BASED RESOURCE GUIDE SERIES

Reducing Vaping Among Youth and Young Adults



<https://www.samhsa.gov/ebp-resource-center>

SAMHSA
Substance Abuse and Mental Health
Services Administration

SAMHSA Technical Assistance Resources

<https://www.peerrecoverynow.org/>



PTTC

Prevention Technology Transfer Center Network
Funded by Substance Abuse and Mental Health Services Administration

<https://pttcnetwork.org/>



ATTC

Addiction Technology Transfer Center Network
Funded by Substance Abuse and Mental Health Services Administration

<https://attcnetwork.org/>



MHTTC

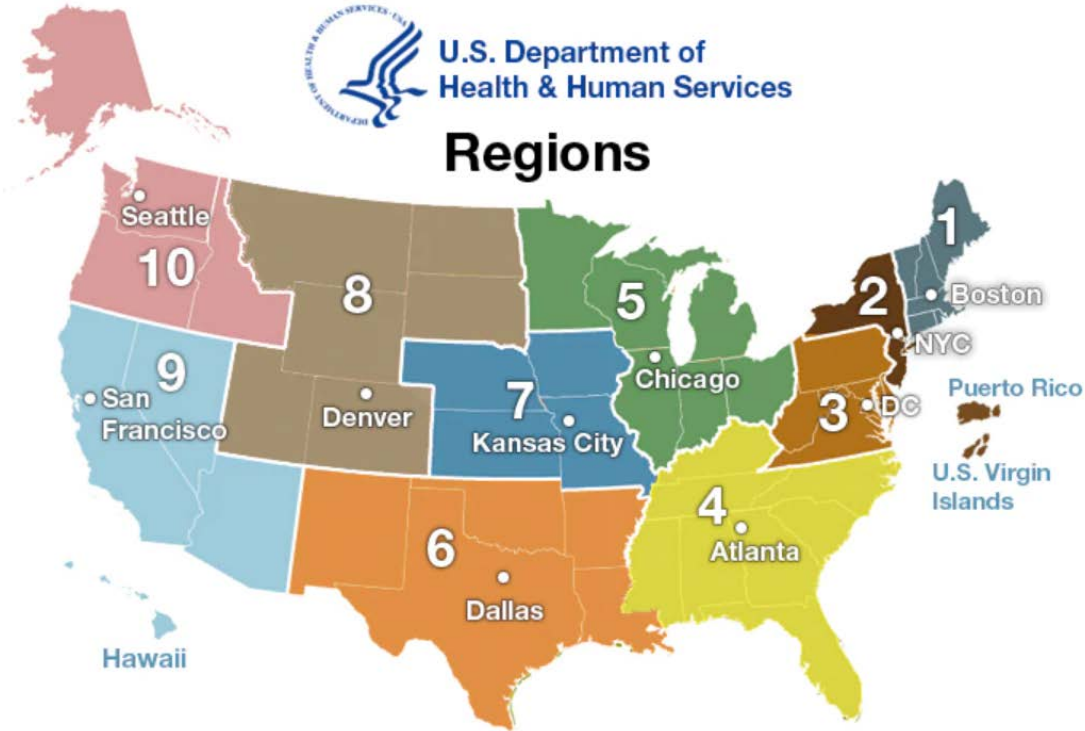
Mental Health Technology Transfer Center Network
Funded by Substance Abuse and Mental Health Services Administration

<https://mhttcnetwork.org/>



<https://www.samhsa.gov/brss-tacs/recovery-support-tools/peers>

SAMHSA Regional Offices



<https://www.samhsa.gov/about-us/who-we-are/regional-administrators>

SAMHSA's mission is to reduce the impact of substance abuse and mental illness on America's communities.



1-877-SAMHSA-7 (1-877-726-4727) • 1-800-487-4889 (TDD)

Rethinking Recovery

Presented by:

- **Erin Wick, MBA, SUDP**
Senior Director, Behavioral Health & Integrated Student Support
- **Izzy Chavez**
Student Assistance Professional

Tuesday, April 27, 2021

WHAT WE KNOW

- The longer a student goes without assistance the longer the remediation time and the more intense the service must be.
- Students receiving appropriate behavioral health care exhibit fewer problem behaviors and perform better in the classroom.

WHAT WE KNOW

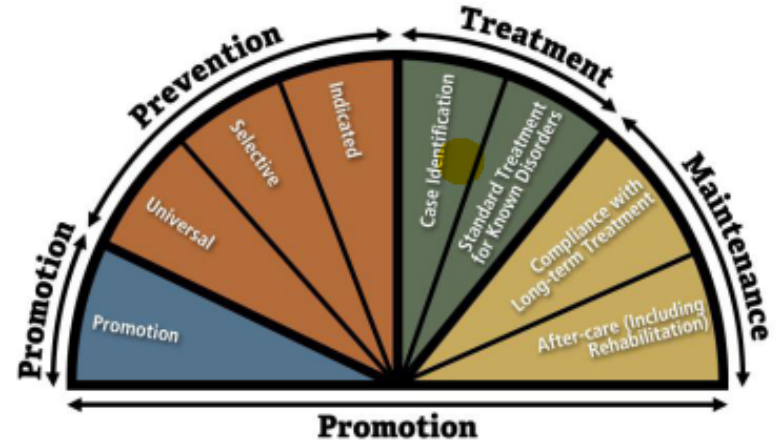
- Locating behavioral health services in schools increases the effectiveness of interventions and reduces barriers that commonly plague providers.
- Nationally, most children and adolescents who receive behavioral health services do so at school.

WHAT WE KNOW

Student Assistance programs are ideally equipped to provide school-based behavioral health supports.

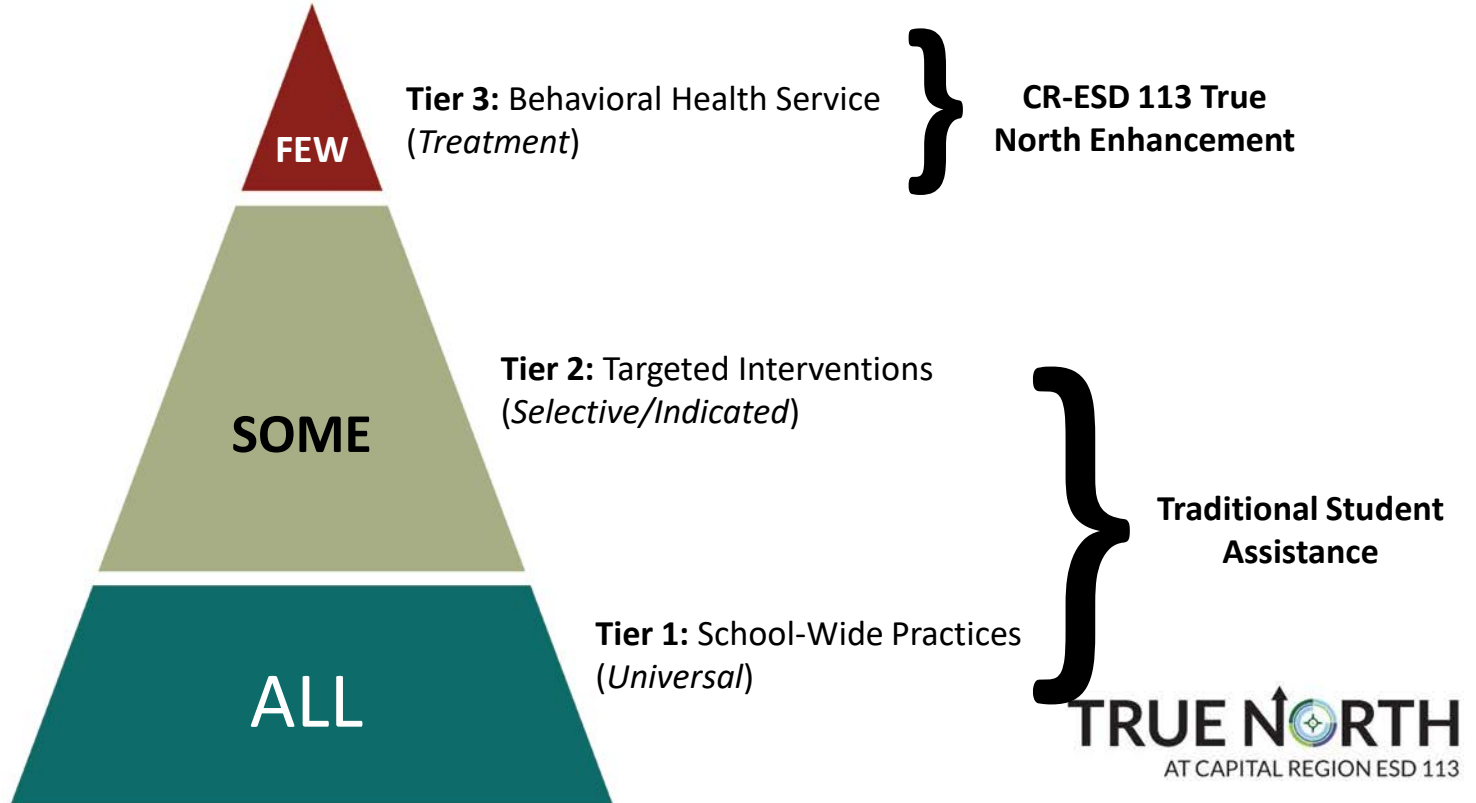
Spectrum of Services

- Promotion
- Prevention
- Treatment
- Maintenance



Source: OSPI. (2012). Washington's Student Assistance Prevention-Intervention Services Program: Program Manual
<https://www.k12.wa.us/sites/default/files/public/preventionintervention/pubdocs/sapismanual2012.pdf>

Student Assistance Program (SAP): MTSS



While we pledge
Hoquiam High School

in word and deed,

Our love for
Hoquiam High!

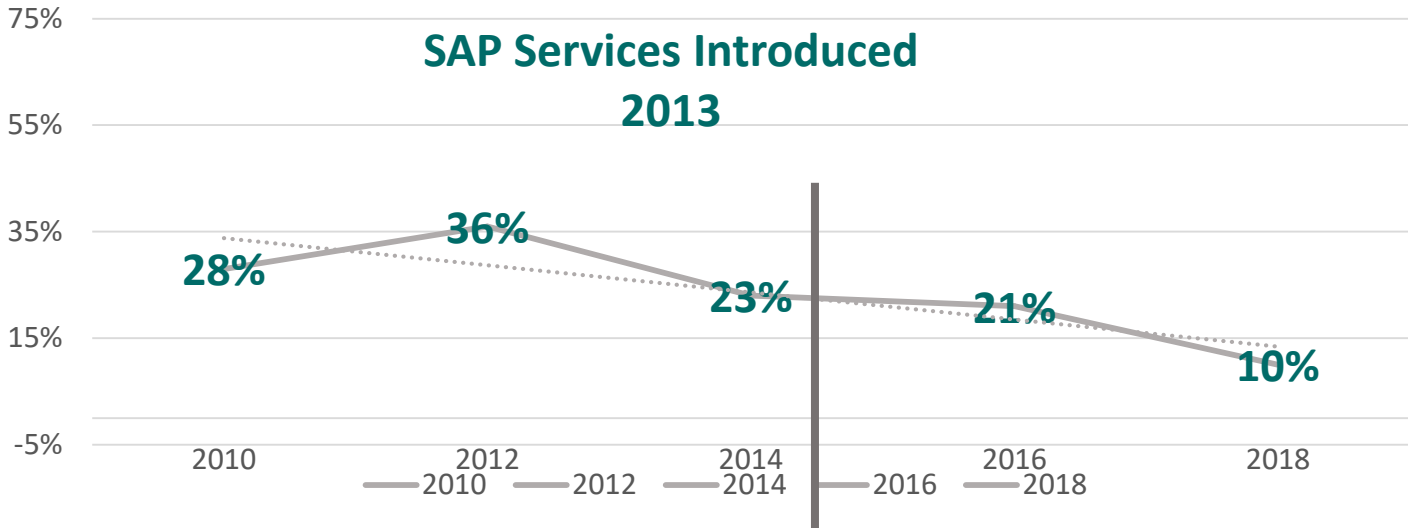


Collaboration is Key

Role of the SAP	Role of the School	Role of the Coalition
<ul style="list-style-type: none">• Prevention education• Behavioral health promotion and awareness• Participation on school multi-disciplinary team• Screen students for behavioral health concerns• Early intervention support services• Behavioral health treatment• Referral and resources	<ul style="list-style-type: none">• Policy development and enforcement• Provide confidential office space for SAP• Refer students to the SAP• Convene and participate in the school multi-disciplinary team• Promote SAP services within the school community	<ul style="list-style-type: none">• Establish community norms that foster healthy behaviors• Community-based behavioral health promotion, awareness and education

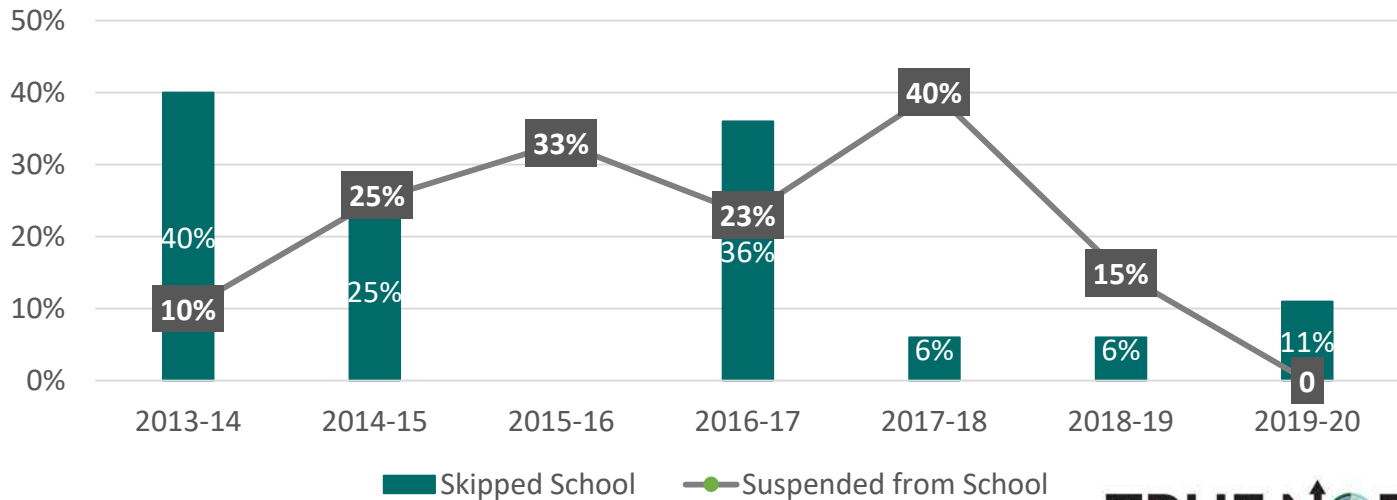
Source: OSPI. (2012). Washington's Student Assistance Prevention-Intervention Services Program: Program Manual <https://www.k12.wa.us/sites/default/files/public/preventionintervention/pubdocs/sapismanual2012.pdf>

SAP Services Impact on Alcohol Use: WA State Healthy Youth Survey



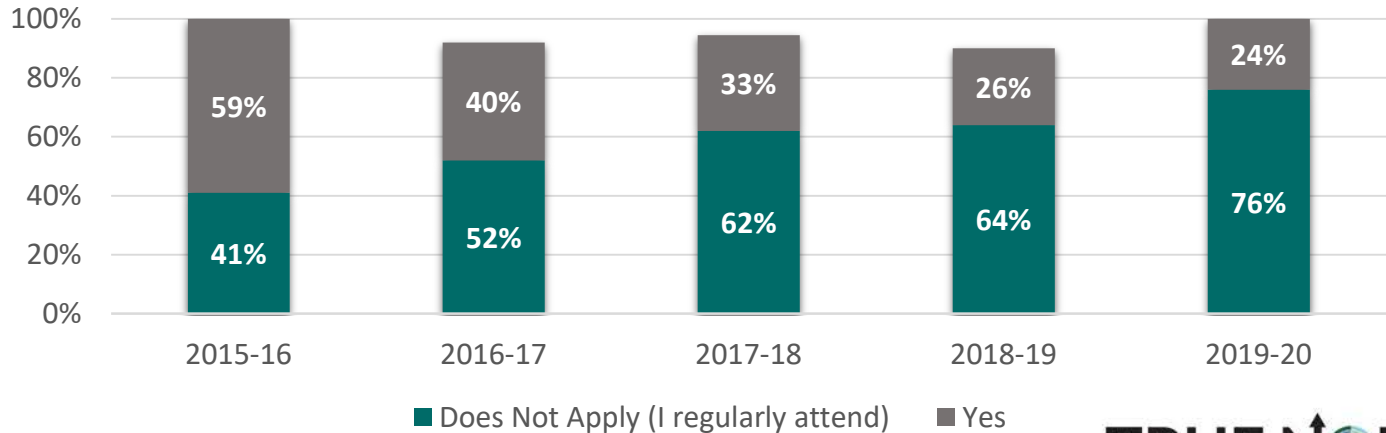
SAP Services Impact on Problem Behaviors

Decrease in problem behaviors by SAP program participants



SAP Services Impact on School Attendance

SAP program participant response to the question: Are you more likely to attend school because of this program?



Questions and Answers



Thank you!

T4PA Center Website: <https://t4pacenter.ed.gov>

Drug Prevention Website: <https://www.ed.gov/opioids/>

